



# ***Floorcare***

*Accessories*





# The Floorcare Range

The Numatic range of Floorcare and Twintec products have all been designed for professional use providing long and reliable operational service.

As with any hardworking product the correct selection of attachments and accessories is vital to the efficient function of the machines.

Within this accessory catalogue will be found a complete selection of brushes and pad drive boards covering a wide range of applications and these should be given full

consideration at the onset in order to ensure that machines are equipped to operate to the highest standards whilst enhancing performance, efficiency and the final results.

It also needs to be appreciated that ongoing maintenance of floor brushes and the use of top quality floor pads is essential to continued

high performance and routine inspection and replacement as and when necessary should become an integral part of the machine maintenance programme.

In addition to floor treatment accessories themselves there is a range of

specialized operational attachments,

Solution Tanks for wet

operations, Dustrol

vacuum systems for dust control requirements and

Spraytec attachments for spray cleaning and

burnishing, all of which play

an important part in

increasing the efficiency of

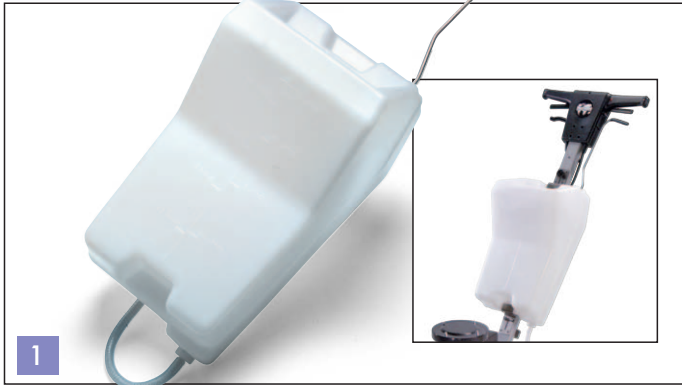
the individual floor

maintenance programmes.

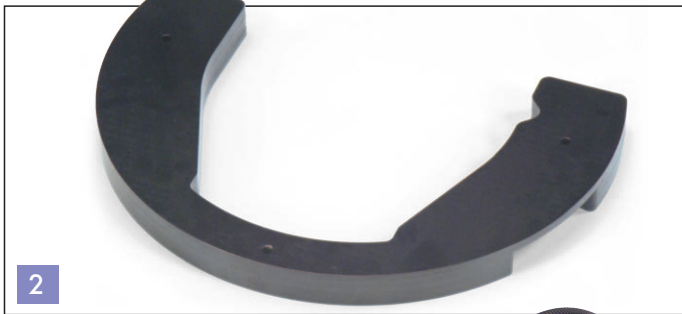


**Innovation,  
design and  
technology...  
Floorcare**

# Floorcare Accessories



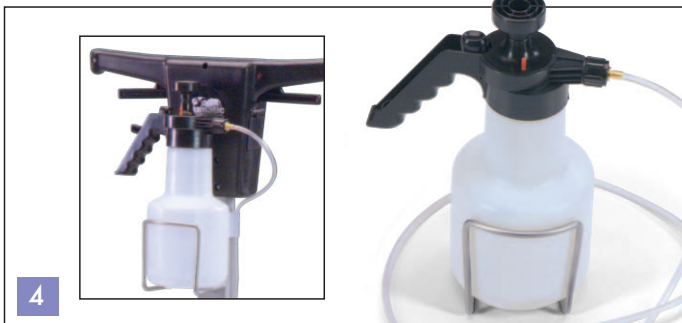
**1**  
FMA606890 BMD Solution Tank



**2**  
FMA606077 BMD 10Kg Drop On Weight



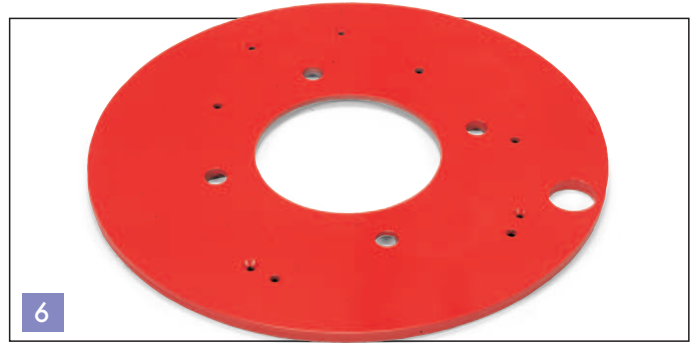
**3**  
FMA606055 BMD Dustrol Kit (Grey)  
FMA606056 NS Dustrol Kit (Grey)



**4**  
FMA606615 BMD optional Spraytec Kit  
FMA606054 NS optional Spraytec Kit



**5**  
FMA606084 NS Solution Tank



**6**  
FMA606052 NS-1500S Internal optional 10Kg Weight (Red)  
Increases 40Kg to 50Kg



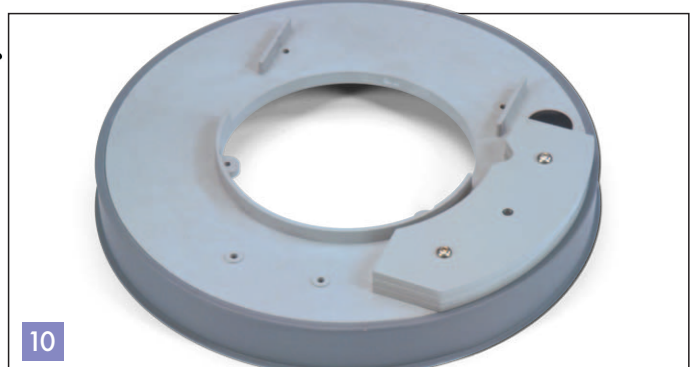
**7**  
FMA606360 BMD Optional 400mm Brush Deck



**8**  
FMA606361 BMD Standard 450mm Brush Deck

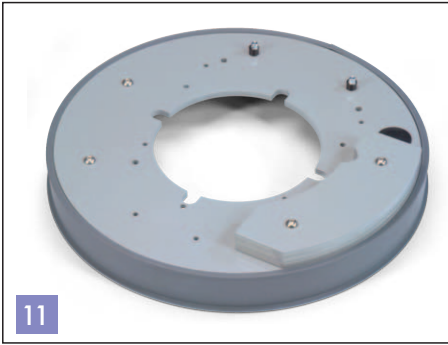


**9**  
FMA606362 BMD Optional 500mm Brush Deck



**10**  
FMA606363 NS-1500H/NSS-450 Standard 450mm Brush Deck with 5Kg Extra Weight





11

FMA606053 NS/NST Standard 10Kg Brush Deck



12

FMA606079 NS/BMD Dustrol Control Brush Ring (also standard with Dustrol Kits)



13

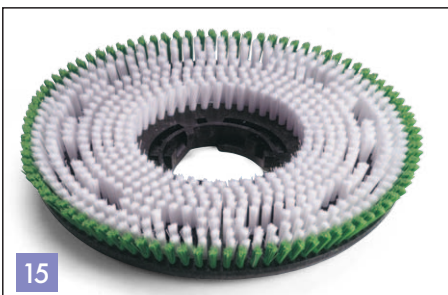
FMA612002 20m Cable Roll Extension UK  
FMA612003 20m Cable Roll Extension Euro

## Standard 450mm Brush Selections



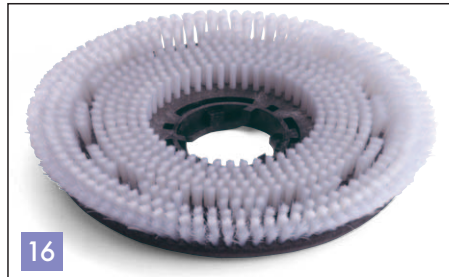
14

FMA606202 450mm Union Mix Polishing Brush



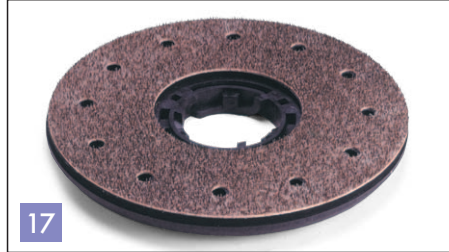
15

FMA606203 450mm Polyscrub Scrubbing Brush



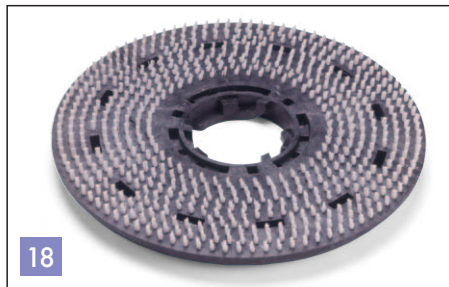
16

FMA606204 450mm Nyloscrub Brush (Shampoo)



17

FMA606206 400mm Nuloc Pad Drive Board



18

FMA606700 400mm Porcupine Pad Drive Board



19

FMA606305 450mm Floortec Heavy Duty Scrubbing/Stripping Brush (Black)



20

FMA606306 450mm Floortec Longlife Scrubbing Brush (Green)



21

FMA606307 450mm Floortec Longlife Light Scrubbing/Polishing Brush (Red)



22

FMA606308 450mm Floortec High Lustre Polishing Brush (Blue)

## High Speed 450mm Brush Range



23

FMA606087 450mm High Speed Spider Drive Polishing Brush



24

FMA606086 400mm High Speed Spider Drive Short Trim Burnishing Brush



25

FMA606078 400mm High Speed Spider Pad Drive



26

FMA606088 450mm Floortec High Speed Spider Drive Longlife Polishing Brush

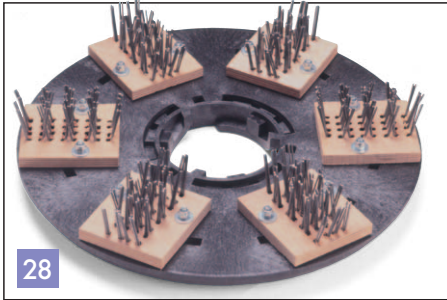


27

FMA606857 400mm Flexi Pad Drive for 300rpm Machines

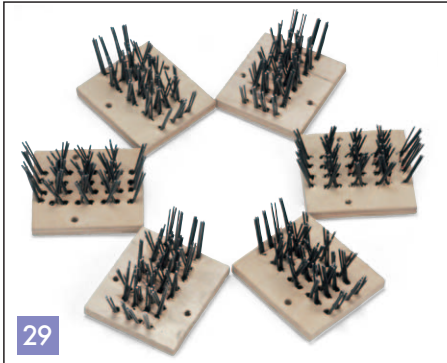


# Specialised Accessory Range



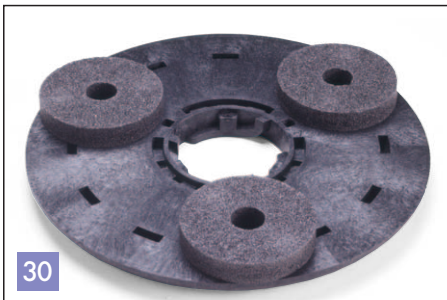
28

FMA606207 400mm Wire Scarifying Brush



29

FMA606834 Replacement 6 Segments for above



30

FMA606208 400mm Carbotex Grinding Disc



31

FMA606835 Replacement 3 Silicon Carbide Discs for above



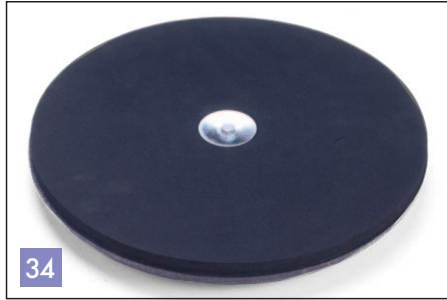
32

FMA606211 400mm Heavy Duty Scarifying Disc



33

FMA606836 Replacement 6 Spirotex Head Units for FMA606211



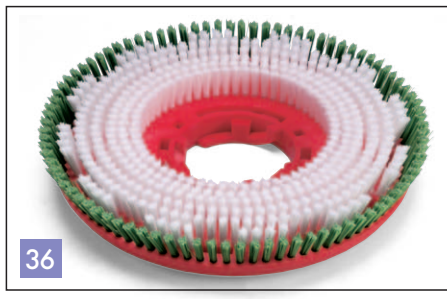
34

FMA606209 400mm Sandotex Drive Disc



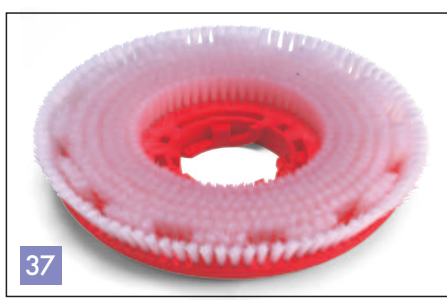
35

FMA606102 400mm Union Mix Polishing Brush



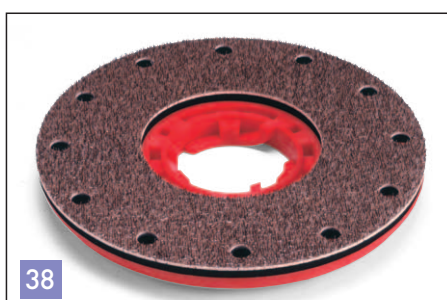
36

FMA606105 400mm Polyscrub Scrubbing Brush



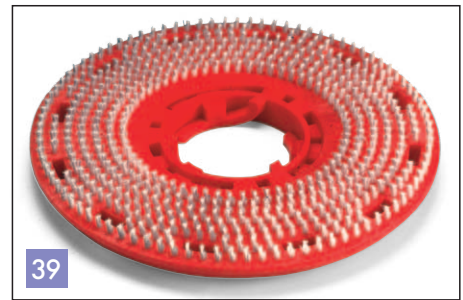
37

FMA606108 400mm Nyloscrub Shampoo Brush



38

FMA606110 360mm Nuloc Pad Drive Board



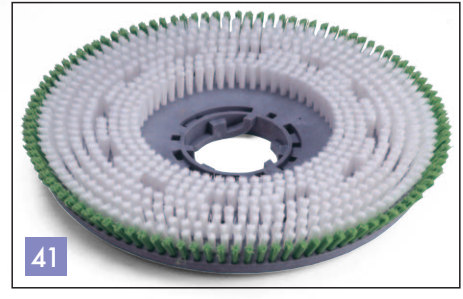
39

FMA606626 360mm Porcupine Pad Drive Board



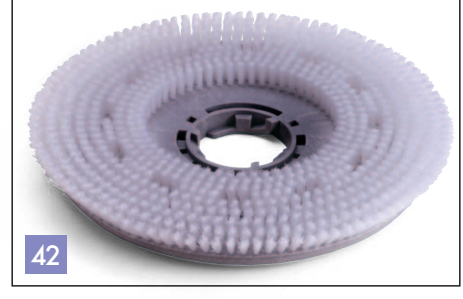
40

FMA606702 500mm Union Mix Polishing Brush



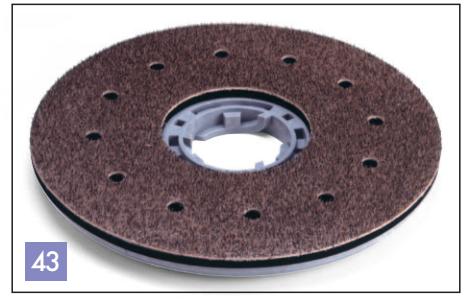
41

FMA606703 500mm Polyscrub Scrubbing Brush



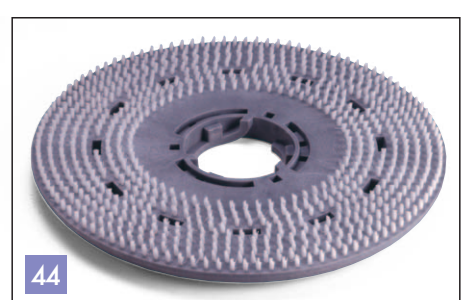
42

FMA606704 500mm Nyloscrub Brush (Shampoo)



43

FMA606706 460mm Nuloc Pad Drive Board

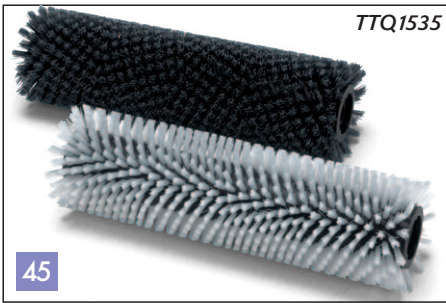


44

FMA606707 460mm Porcupine Pad Drive Board



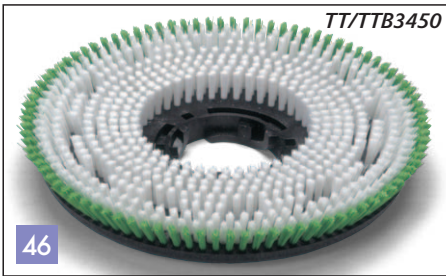
# Twintec Accessories



TTQ1535

45

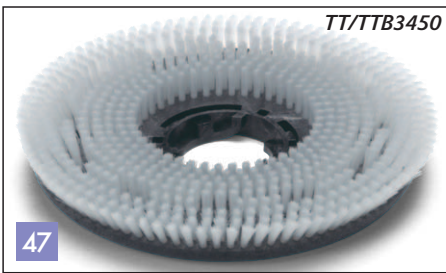
TTA606225 Nyloscrub Cylinder 1535 Brush  
TTA606226 Floortec Cylinder 1535 Brush



TT/TTB3450

46

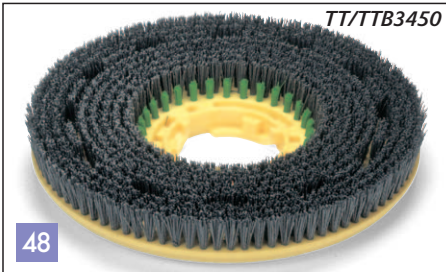
TTA606203 450mm Polyscrub Brush (Single)



TT/TTB3450

47

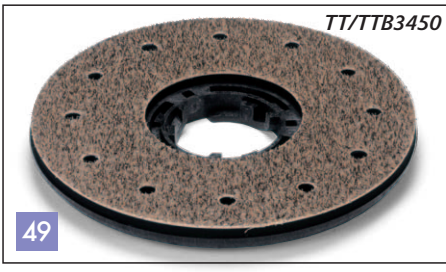
TTA606204 450mm Nyloscrub Brush (Single)



TT/TTB3450

48

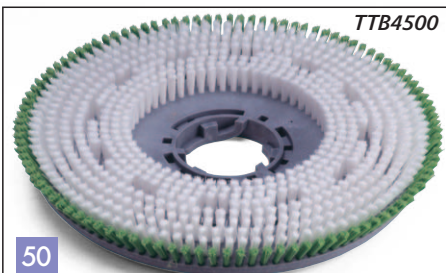
TTA606306 450mm Floortec Longlife Brush (Single)



TT/TTB3450

49

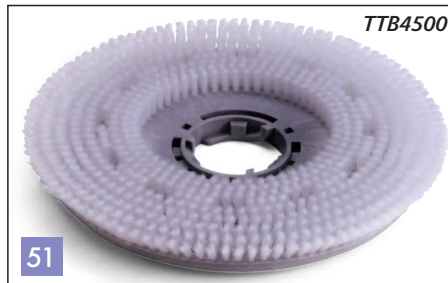
TTA606206 400mm Nuloc Pad Drive Board (Single)



TTB4500

50

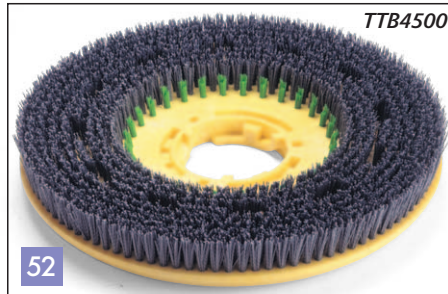
TTA606703 500mm Polyscrub Brush (Single)



TTB4500

51

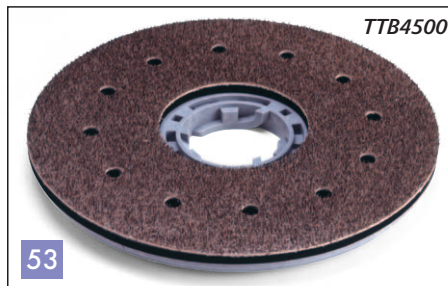
TTA606704 500mm Nyloscrub Brush (Single)



TTB4500

52

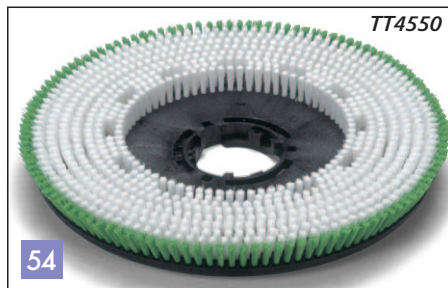
TTA606316 500mm Floortec Longlife Brush (Single)



TTB4500

53

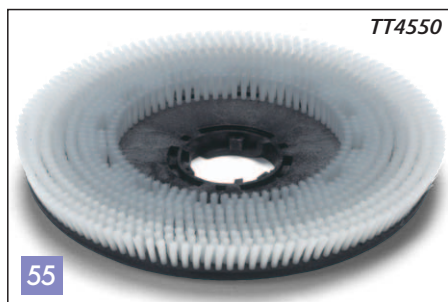
TTA606706 460mm Nuloc Pad Drive Board (Single)



TT4550

54

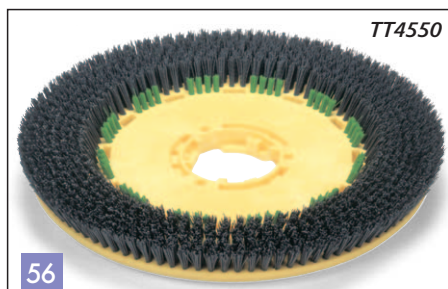
TTA606028 550mm Polyscrub Brush (Single)



TT4550

55

TTA606550 550mm Nyloscrub Brush (Single)



TT4550

56

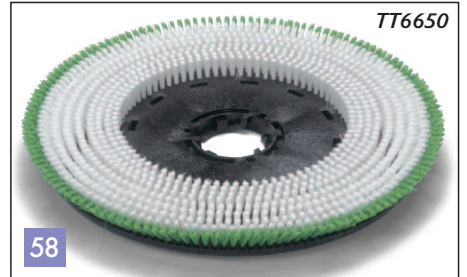
TTA606551 550mm Floortec Longlife Brush (Single)



TT4550

57

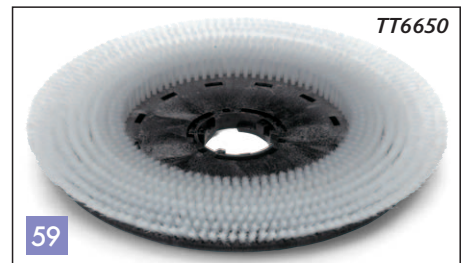
TTA606034 500mm Nuloc Pad Drive Board (Single)



TT6650

58

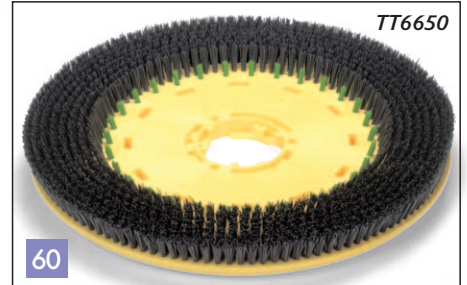
TTA606021 650mm Polyscrub Brush (Single)



TT6650

59

TTA606554 650mm Nyloscrub Brush (Single)



TT6650

60

TTA606555 650mm Floortec Longlife Brush (Single)

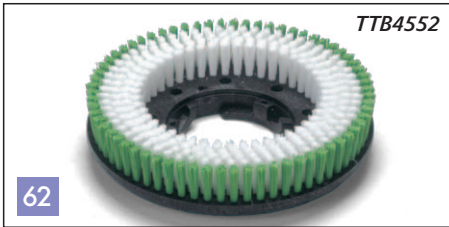


TT6650

61

TTA606763 600mm Nuloc Pad Drive Board (Single)





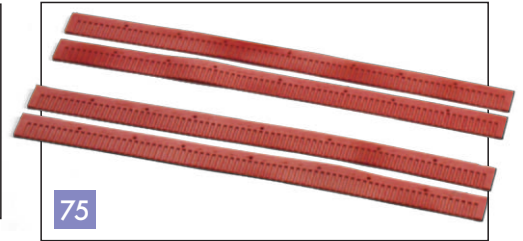
62

TTA606029 280mm Polyscrub Twin Brush Design (2 Required)



69

TTA606891 330mm Nuloc Twin Brush Design (2 Required)



75

TTA606091 Replacement Polyurethane Blade Set for TTQ1535 (4 pieces)



63

TTA606552 280mm Nyloscrub Twin Brush Design (2 Required)



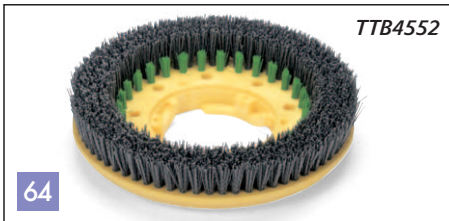
70

TTA607250 Wander Floor Kit for all TT Machines



76

TTA606071 Replacement Polyurethane Blade Set for TT3450/TTB3450 (2 pieces)  
TTA606072 Replacement Polyurethane Blade Set for TT4500/TT4550/TTB4552 (2 pieces)  
TTA606073 Replacement Polyurethane Blade Set for TT6650/TTB6652 (2 pieces)



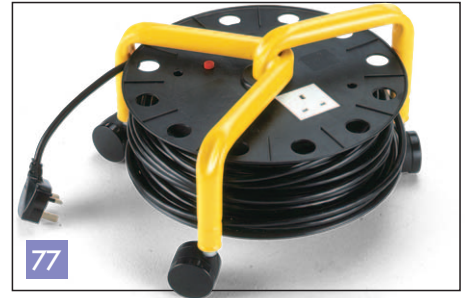
64

TTA606553 280mm Floortec Twin Brush Design (2 Required)



71

TTA609100 Emptying Hose Extension Kit



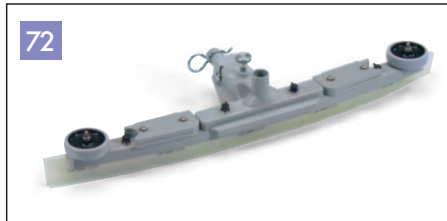
77

TTA612002 20m Cable Roll Extension UK  
TTA612003 20m Cable Roll Extension Euro



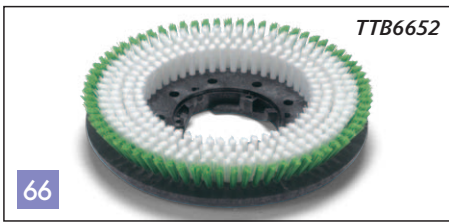
65

TTA606035 280mm Nuloc Twin Brush Design (2 Required)



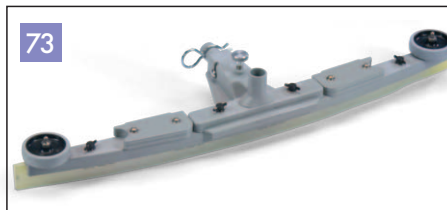
72

TTA606066 TT3450/TTB3450 Semi Parabolic Polyurethane Floor Nozzle



66

TTA606033 330mm Polyscrub Twin Brush Design (2 Required)



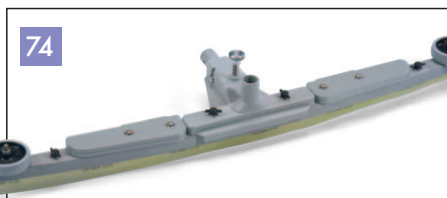
73

TTA606068 TT4500/4550 and TTB4552 Semi Parabolic Polyurethane Floor Nozzle



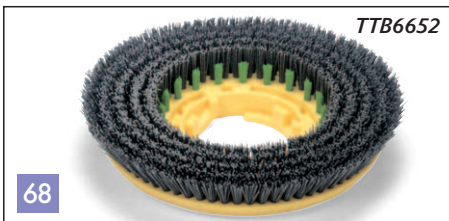
67

TTA606556 330mm Nyloscrub Twin Brush Design (2 Required)



74

TTA606070 TT6650/TTB6652 Semi Parabolic Polyurethane Floor Nozzle



68

TTA606557 330mm Floortec Twin Brush Design (2 Required)



**Numatic** United Kingdom

Numatic International Limited,  
Chard, Somerset, TA20 2GB,  
UNITED KINGDOM  
Telephone: 01460 68480  
Fax: 01460 68560  
Sales- Tel: 01460 68600  
Fax: 01460 68458

**Numatic** France

Numatic International S.A.  
13/17 rue du Valengelier,  
EAE la Tuilerie,  
77500 Chelles,  
FRANCE  
Tel: 01 64 72 61 61  
Fax: 01 64 72 61 62

**Numatic** Germany

Numatic International GmbH  
Fränkische Straße 15-19,  
30455 Hannover  
DEUTSCHLAND  
Tel: 05 11 98 42 16 0  
Fax: 05 11 98 42 16 20

**Numatic** South Africa

Numatic International (Pty.) Ltd.  
Tillbury Business Park,  
16th Road, Randjes Park,  
Midrand,  
SOUTH AFRICA  
P.O. Box 3867,  
Midrand 1685  
Tel: 011 314 1875  
Fax: 011 314 1816

**Numatic** Netherlands

*Benelux Distribution*

Numatic International BV  
Postbus 101  
2400 AC Alphen aan den Rijn  
NEDERLAND  
Tel. 0172 467 999  
Fax: 0172 467 970



www.numatic.co.uk © Numatic International Limited 2005  
233451/05051A

